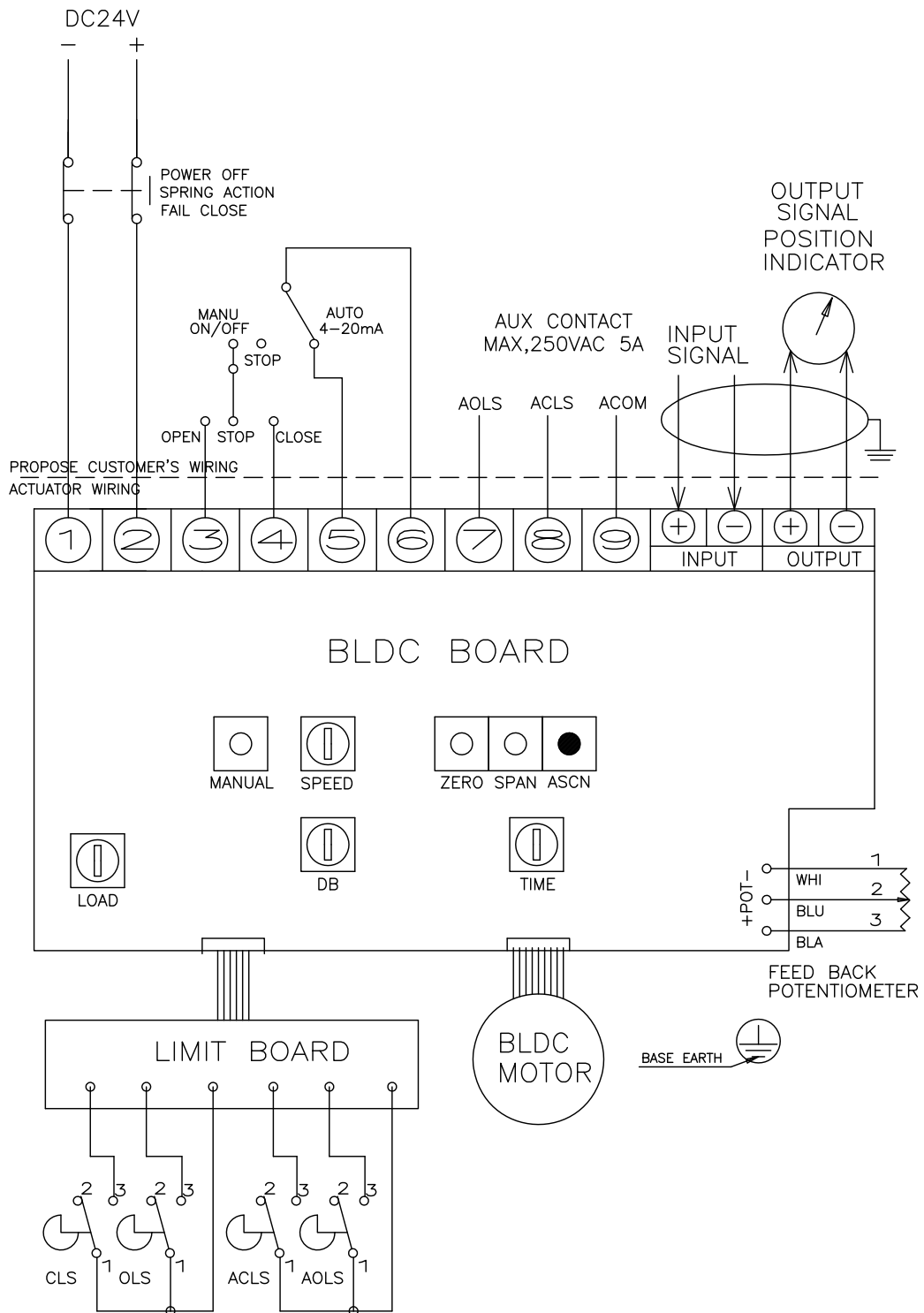


CLS : CLOSE LIMIT SWITCH (250VAC 5A)
 OLS : OPEN LIMIT SWITCH (250VAC 5A)
 ACLS : AUX. CLOSE LIMIT SWITCH (250VAC 5A)
 AOLS : AUX. OPEN LIMIT SWITCH (250VAC 5A)

	CLOSE	OPEN
CLS 1-2		
OLS 1-2		
ACLS 1-3		
AOLS 1-3		



	DRAW H.J KWON	△					
	CHECK	SYM	E C N NO	CHANGES	DATE	SIGN	APPD
	APPD	PART NAME DC24V WIRING DIAGRAM ALS,BLDC,FAIL CLOSE					
SR-03 1	DATE 16.08.22	DWG NO.	RCC-B825-A				
APPLICATION							