

NOTES: (SEE INSTALLATION & OPERATION MANUAL LMENIM 3306 FOR DETAILS)  
CIRCUIT SHOWN WITH VALVE IN FULLY CLOSED POSITION AND WITH POWER OFF.

- REMOTE INPUTS**  
SIGNAL THRESHOLD - MINIMUM "ON" 19.2V AC/DC  
MAXIMUM "OFF" 5.0V AC/DC  
MAX LOAD - 10 mA / 110V AC  
2 mA / 24V DC  
REQUIRED CONTROL SIGNAL DURATION = 350ms MIN.  
INPUTS 0,1,2 ARE FIELD CONFIGURABLE FOR CLOSE/OPEN INHIBIT, USER INPUT OR ESD. IN ADDITION, INPUT 2 MAY BE CONFIGURED FOR CSE REMOTE SELECTION INDICATION.  
DEFAULT INPUT CONFIGURATION:  
INPUT 0 - ESD,  
INPUT 1 - OPEN INHIBIT,  
INPUT 2 - CLOSE INHIBIT.

- REMOTE INPUT JUMPERS**  
JUMPERS CAN BE USER WIRED TO CONNECT DIG COMMONS #1, 2 & 3 (AS NEEDED). THE 3 REMOTE WIRING GROUPS ARE ELECTRICALLY ISOLATED, INTERNALLY. ONLY A SINGLE POWER SOURCE MAY BE USED TO POWER ANY ONE GROUP BUT DIFFERENT SOURCES MAY POWER DIFFERENT GROUPS. IF DIFFERENT SOURCES ARE USED, ENSURE THAT THE POLARITIES ARE CORRECT.

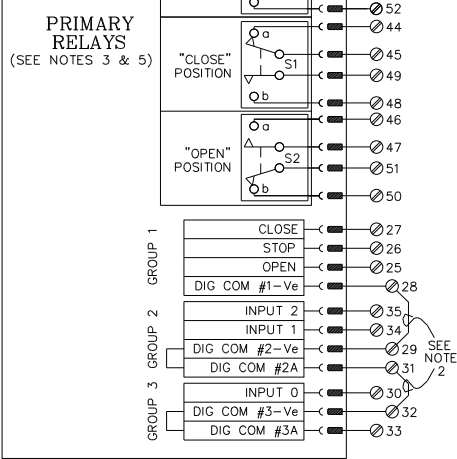
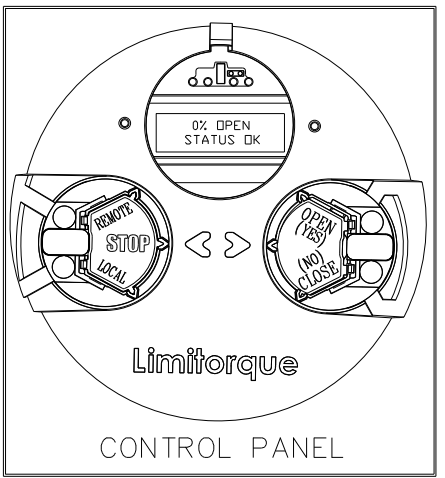
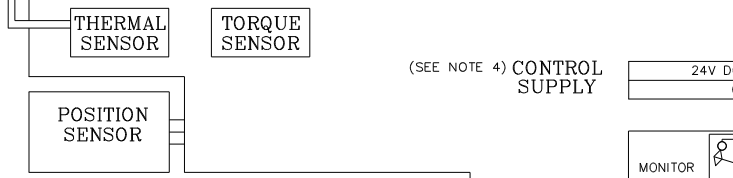
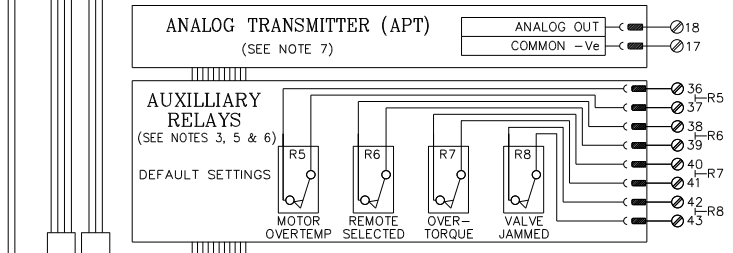
- DEFAULT [S] SETTINGS**  
THE DEFAULT OPERATING CONFIGURATION FOR THE "S" OUTPUTS ARE SHOWN IN THE TABLE BELOW. THE CONTACT STATES SHOWN IN THE SCHEMATIC REPRESENT A FULLY CLOSED VALVE. SEE OPERATION MANUAL FOR ALTERNATE CONFIGURATIONS.

| OUTPUT SWITCH | VALVE POSITION |           | FUNCTION    |
|---------------|----------------|-----------|-------------|
|               | FULL CLOSE     | FULL OPEN |             |
| S1a           | —              | —         | CLOSE LIMIT |
| S1b           | —              | —         |             |
| S2a           | —              | —         |             |
| S2b           | —              | —         | OPEN LIMIT  |

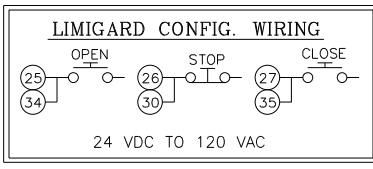
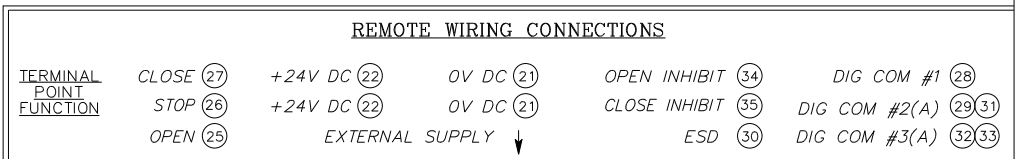
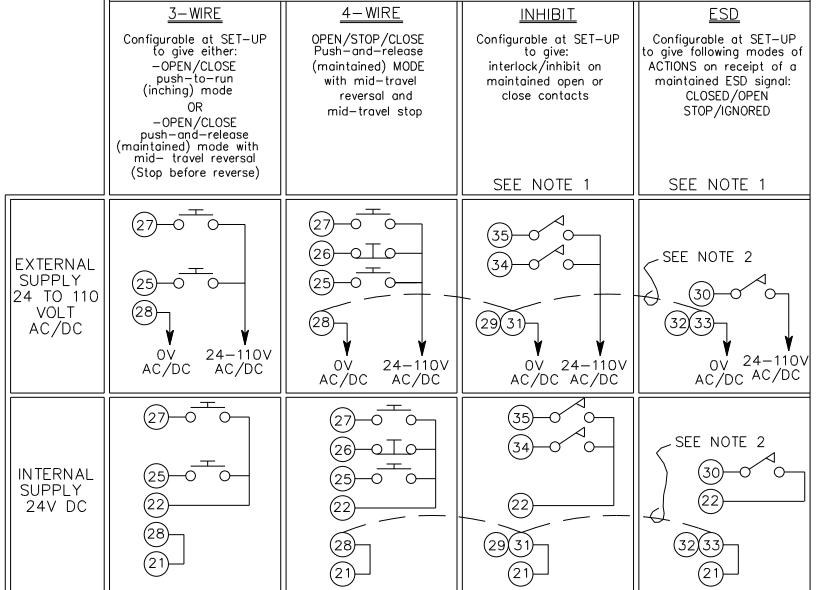
— OPEN CONTACT  
█ CLOSED CONTACT

- MAXIMUM EXTERNAL LOAD**  
TERMINALS 21 AND 22 (24 VDC)  
- 5W MAX. EXT. LOAD
- CONTACT RATINGS**  
S1, S2- 0.5 AMP @ 125 VAC, 2 AMPS @ 30 VDC (RESISTIVE)  
MONITOR- 0.5 AMP @ 125 VAC, 2 AMPS @ 30 VDC (RESISTIVE)  
R5-R8- 5 AMPS @ 250 VAC OR 30 VDC (RESISTIVE)

- RELAY BOARDS**  
SET JUMPER J1 TO POSITION 3-4 ON THE RELAY BOARD. CONNECT 22-PIN CONNECTOR WITH YELLOW WIRES TO J3 ON THE RELAY BOARD.
- APT OR ATT EXTERNAL LOAD**  
4-20 mA OUTPUT SIGNAL - 600 OHMS MAX.  
0-10 VDC OUTPUT SIGNAL - 1000 OHMS MAX.  
SET JUMPERS JP1 AND JP2 TO POSITION 1-2 ON ANALOG BOARD.  
THE 3-PIN CONNECTOR WITH BLUE WIRES SHOULD BE CONNECTED TO J3 ON THE ANALOG BOARD.



(-) NEGATIVE COMMON



|           |          |   |                    |
|-----------|----------|---|--------------------|
| DRAWN     | DATE     | Limitorque Actuation Systems<br>5114 WOODALL ROAD, LYNCHBURG, VIRGINIA 24506-1318 |                    |
| RAC       | 11/10/10 | TITLE   | QX WIRING DIAGRAM  |
| CHECKED   | DATE     | Standard  | No CS              |
| ZKC       | 11/12/10 | APT (Analog Position Transmitter)   |                    |
| APPROVED  | DATE     | DC Voltage  |                    |
| MAD       | 11/15/10 | OB, OS w/ opt (4) 5A. (1) 2A monitor relay  |                    |
| UNIT TYPE | QX       | DWG NO  | WD-QX-320010-00000 |
| REV       | 00H      | REVISION  |                    |
|           |          | SHEET 1 OF 1  |                    |