

BECK[®]



**ELECTRONIC
CONTROL DRIVES
FOR INDUSTRIAL
STEAM BOILERS**



Increasing Business Pressures Necessitate Boiler Control Improvements

Today's industrial climate is characterized by ever increasing fuel costs, emission regulations, and global competition—optimizing boiler efficiency is critical to meeting these challenges. Whether producing process steam, plant power—or both—boilers need to maintain optimum combustion and feedwater control under a variety of changing conditions. In response, industrial plants are continually investing in control systems and instrumentation to meet regulations, reduce costs, and avoid costly trips and outages. There is no end to this trend in sight.

Valve and Damper Actuation is Key to Improved Boiler Control and Efficiency

In spite of the critical role of boiler control valves and dampers with respect to efficiency, safety and reliability, their performance is often ignored. In many cases, actuator problems tend to be addressed only after a serious or complete failure occurs. The rest of the time, poor performance goes undetected, or is simply tolerated, while more visible problems receive attention.

Boiler valve and damper actuators are a leading source of boiler control problems. Pneumatic actuators are highly susceptible to stick/slip response, excessive dead time, inconsistent performance with changing conditions, and performance degradation over time. As a result, pneumatic actuation simply cannot provide the level of control performance provided by Beck drives. Similarly, typical electric actuators are poorly suited for active boiler control since most are limited by motor duty cycles, provide less accurate positioning capabilities, and are less reliable—especially in the harsh operating conditions for which Beck drives are designed.



Hundreds of Boilers are Benefiting from Beck Drives ... and the Number is Growing

Investments in advanced control instrumentation and logic are very necessary, but are only as effective as the precision, repeatability and responsiveness of the valves and dampers. Industrial boiler owners and operators, who understand the importance of the valve and damper control hardware, replace pneumatic actuators with Beck Electronic Control Drives. In fact, Beck drives are installed on modulating applications on over 600 industrial boilers of all sizes and styles. In addition to industrial applications, Beck drives are modulating the valves and dampers on over 1,000 electric utility boilers. And, the number of boiler installations is continually growing.

Why do Beck drives improve control and eliminate the inherent problems of pneumatic actuators and typical electric actuators?

- A Beck drive responds to a modulating controller demand signal instantaneously, regardless of changing loads and conditions. Therefore, Beck drives will not stick or slip like pneumatic actuators, thus eliminating dead time and position overshoot.
- Beck drives track the controller demand signal closely under closed-loop conditions, with resolution unmatched by pneumatic and typical electric actuators. This eliminates limit cycling and ensures tight, stable process control.
- Beck drives provide consistent control over time with virtually no maintenance requirements.
- Beck drives eliminate the dependence of costly and unreliable air systems, thus eliminating problems like freezing and contamination.
- Weather, dust, dirt, and temperature (-40 to 185° F.) conditions do not affect performance.
- The extreme ruggedness and quality of Beck drives simply ensures that they outlast and outperform other actuators.

Contact a Beck Sales Engineer at 215-968-4600 to find out more about the best drives for your installations. Visit our website at www.haroldbeck.com. E-mail: sales@haroldbeck.com

All Types of Boilers Benefit

Whether a boiler is large or small, subject to severe load swings or base-loaded, Beck drives provide the best possible valve and damper control. Some of the biggest benefits are realized on boilers subject to extreme load swings. In these cases, Beck drives have shown that the instantaneous response capability, without overshoot, provides exceptionally stable and fast load changes. Likewise, boilers with active loads or other external disturbances benefit from the drive's ability to track a demand signal closely, without modulation restrictions and performance inconsistencies. Improving positioning, while eliminating dead time and overshoot, always results in better process control. Loops not only perform better, but also are easier to tune, stay tuned longer, and are more tolerant of varying conditions.



Field Proven Results

Continually, boiler owners make the investment in Beck drives and realize the long term benefit. Following are a series of data charts that were generated by just one such Beck drive user.

Figure 1A

ID FANS PNEUMATIC DRIVE CONTROL

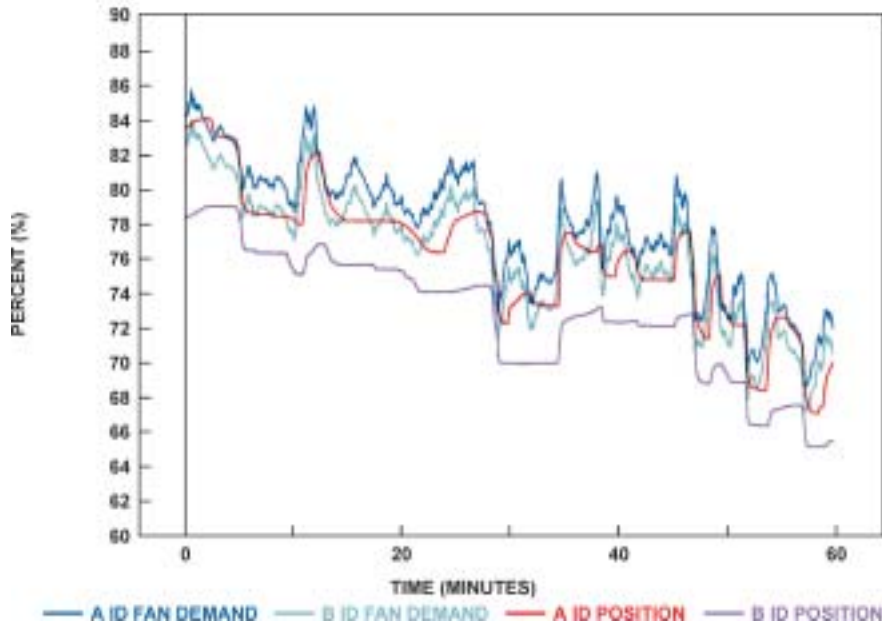


Figure 1A shows data for a boiler with dual ID dampers modulated with pneumatic actuators. Both dampers' actuators receive the same demand signal which is shown biased for clarity. The corresponding damper responses are shown as well. Neither damper actuator could follow the signal closely enough to provide good furnace pressure control. Additionally, although dampers, damper actuators and the controller demand signal are identical, the actuators performed differently from one another. This highlights not only poor response, but the typical inconsistent response of pneumatic actuators as well.

Figure 1B

ID FANS PNEUMATIC DRIVE CONTROL

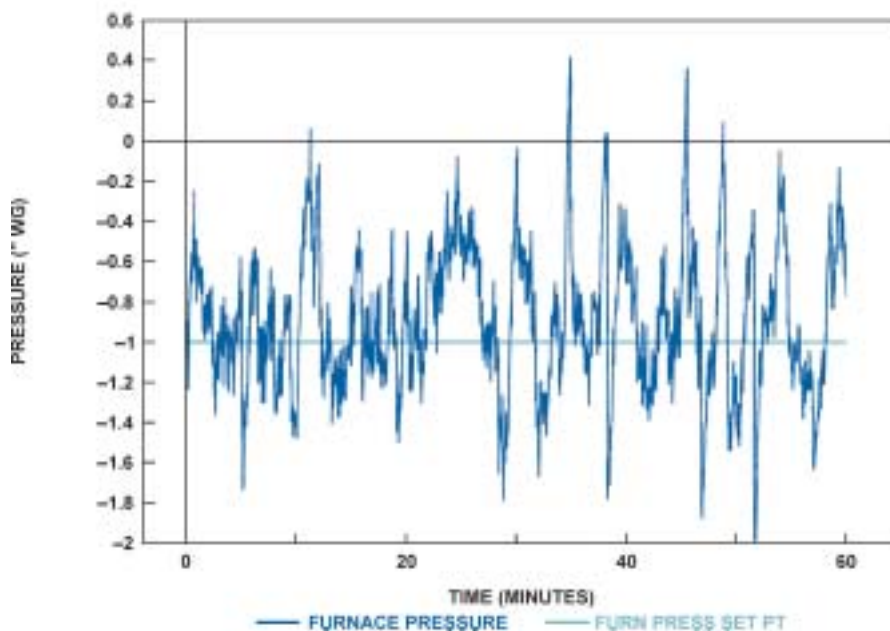


Figure 1B shows the resulting furnace pressure control with the pneumatic actuators in place. Note the following: 1) The pressure control is poor with a wide band of variability; 2) the furnace pressure occasionally goes positive; 3) the control setpoint is set at -1 inch of water column. Compare these results to Figure 2B after Beck drives were installed.

Figure 2A

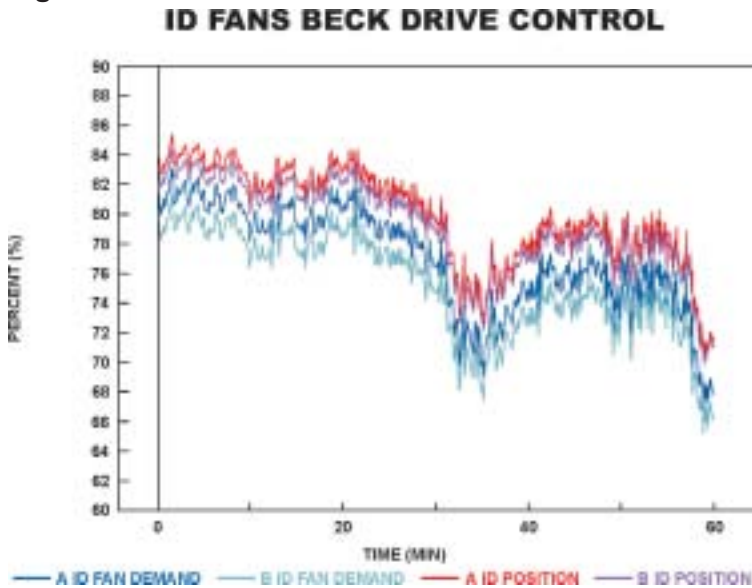


Figure 2A shows the response of the two ID dampers after Beck Electronic Control Drives were installed. As in Figure 1A, biases were added to all the signals for the sake of display clarity, but the two demand signals are identical and the position signals actually overlay the demand. Note how closely the damper position tracks the demand, allowing for optimal furnace pressure control.

Figure 2B

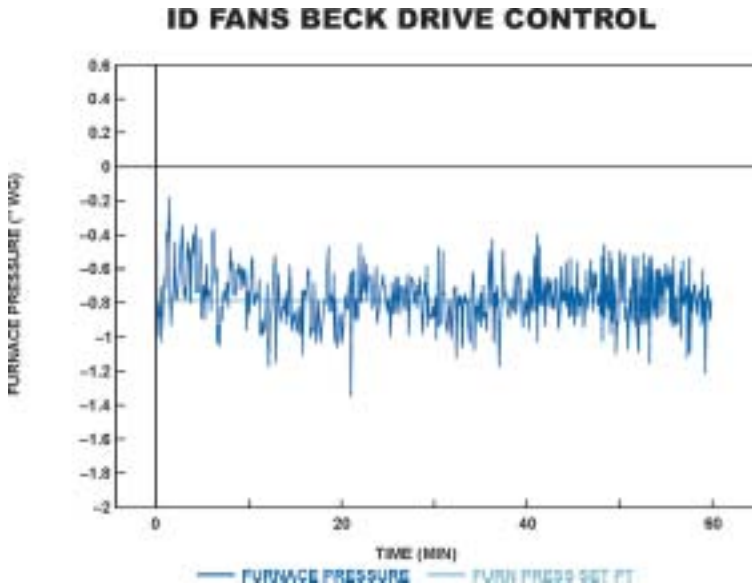


Figure 2B shows the furnace pressure control after the Beck drives were installed. It is easy to see at a glance how much tighter the control results are compared to Figure 1B; however, it is also important to note the following: 1) Furnace pressure no longer makes positive excursions; 2) the loop setpoint has actually been moved from -1 in WC to a more efficient -0.8 inches WC; 3) this data was collected after the Beck drives were installed, but before any tuning or other changes were made.

Figure 2C

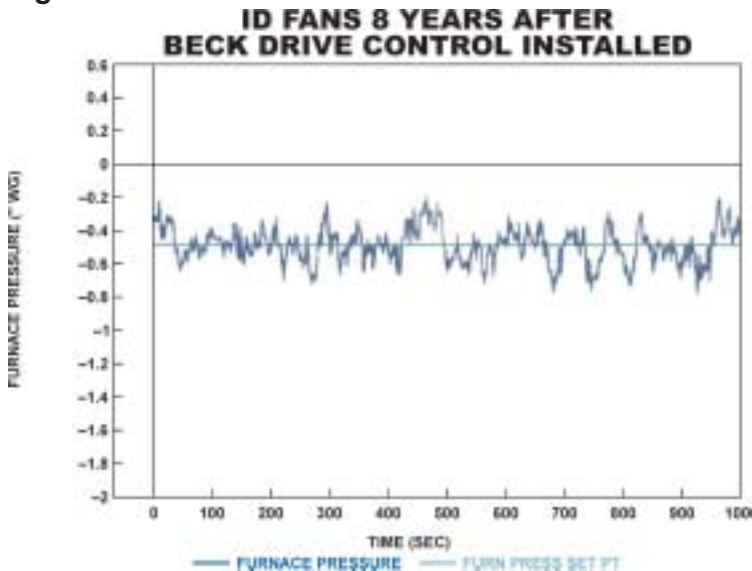


Figure 2C shows data collected on the ID dampers eight years after the Beck drives were installed. Clearly, performance is still excellent. Further control improvements over the years allowed the furnace pressure setpoint to be moved from -0.8 inches WC to -0.5 inches WC; further accentuating the need for excellent damper control.

In addition to damper control, good boiler control also requires stable feedwater and fuel control. The example below shows the results of installing a Beck drive on a feedwater flow control valve. This particular boiler is subject to extremely large and sudden steam load swings, often in excess of 30% of the boiler rating in less than one minute.

With the original pneumatic actuator installed on the feedwater valve, drum level control limited the boiler's ability to meet the steam load requirements. The installation of a Beck drive provided the feedwater valve performance necessary for responsive, stable drum level control—even during the most severe load changes.

Figure 3A

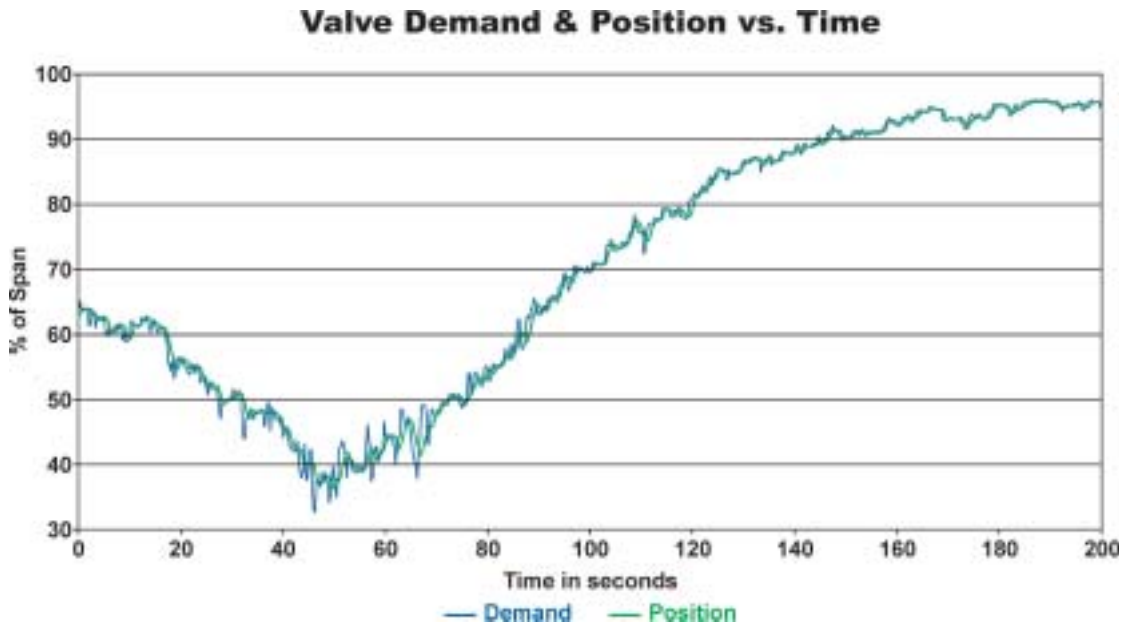


Figure 3A shows both the controller demand signal to the feedwater valve, as well as the position feedback signal from the Beck drive. This data indicates the controller's response to a rapid 30% load increase on the boiler. Some inverse response due to level swell initially occurs, after which the controller rapidly increases demand to the feedwater valve. The Beck drive follows the demand perfectly.

Figure 3B

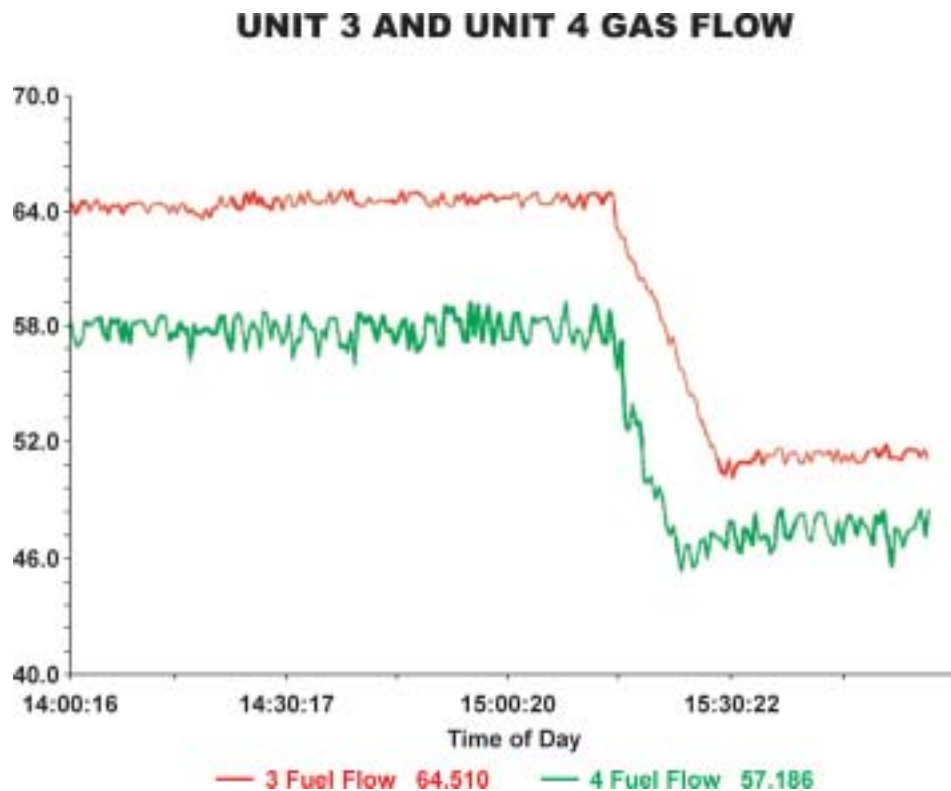


Figure 3B shows a process trend during the entire recovery period of the load upset depicted above. In spite of boiler swell caused by the excessively large and rapid load swing, the drum level was controlled effectively, never exceeding safe limits and settling out within 20 minutes. The excellent feedwater response provided by the Beck drive enabled the plant to aggressively tune the drum level loop; thereby avoiding high and low drum level conditions.

Figure 4, below, contrasts the performance between natural gas fuel valves on two large, identical, gas-fired boilers. One boiler's gas valve was fitted with a Beck drive, while the second's was fitted with a pneumatic actuator. The graph below plots the gas flow for each simultaneously, with both boilers under the same loading conditions. Note that the gas flow from the Beck-equipped valve (red line) is more stable than that through the pneumatically actuated valve (green line). Improving the ability to control the fuel flow more closely and with greater stability is an important advantage offered by the Beck drive. Not only is boiler efficiency improved by the direct benefit of better gas flow control, but better overall boiler performance can be achieved by reducing the interactions with other control loops. For example, better fuel flow control results in the following:

- Reduced air flow instability induced through cross-limiting in the control strategy.
- Reduced furnace pressure instability caused by fuel variations and induced air flow variations.
- Reduced excess air fluctuations caused by fuel and air flow variations.

Figure 4



Although much of the data shown in the above chart is under steady-state load conditions, more active boiler loads increase the importance of fuel flow control.

GENERAL SPECIFICATIONS

<p>Drive Power Models 11, 14 & 22-309 22-409 22-809</p>	<p>120, 240 V ac, single-phase, 50 or 60 Hz 208 V ac, three-phase, 50 or 60 Hz 208, 240, 480, 575 V ac, three-phase, 50 or 60 Hz</p>
<p>Output Torque Model 11 Model 14 Model 22</p>	<p>Up to 1,800 lb-ft Up to 4,000 lbs of thrust Up to 8,000 lb-ft</p>
<p>Operating Conditions</p>	<p>−40° to 185° F (−40° to 85° C) 0 to 99% relative humidity</p>
<p>Input Signal Options</p>	<p>4–20 mA or 1–5 V dc.</p>
<p>Communication Interface Options</p>	<p>HART® protocol or local pushbutton/LED panel and RS-232 Serial Commands</p>
<p>Position Feedback Signal</p>	<p>4–20 mA</p>
<p>Action on Loss of Input Signal</p>	<p>Stays in place (all models) or moves to a preset position (some models)</p>
<p>Action on Loss of Power</p>	<p>Stays in place</p>



BECK® HAROLD BECK & SONS, INC.
 2300 TERRY DRIVE • NEWTOWN, PENNSYLVANIA 18940 • USA
 PHONE: 215-968-4600 • FAX: 215-860-6383
www.haroldbeck.com



Acrodyne Pty Ltd | Call 1300 422 882
 ABN 22 006 309 753
www.acrodyne.com.au