

Air Filter Regulator YT-200, YT-205

Ordering Symbols: YT-200 / YT-205 ■ ■ ■ ■

Model	Adjustable Range	Connection Type	Gauge	Ambient Temp
YT-200	A 0~4.2kgf/cm ²	P PT1/4	O NONE	1 -20~70 °C
YT-205	B 0~8.4kgf/cm ²	N NPT1/4	1 4Kgf/cm ²	2 -20~120 °C
	C 0~2.1kgf/cm ²		2 10Kgf/cm ²	3 -40~70 °C



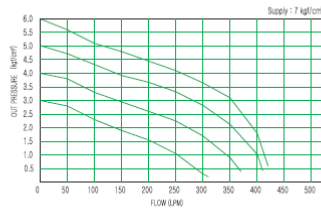
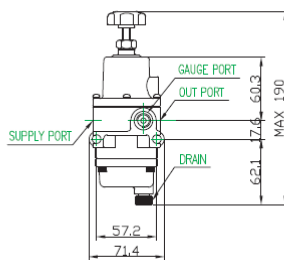
YT-200



YT-205

Specifications

Item.Type	YT-200		YT-205
	A	B	C
Max.Supply Pressure	15kgf/cm ² (231psi)		
Max.Output Pressure	4.2kgf/cm ² (57psi)	8.4kgf/cm ² (120psi)	2.1kgf/cm ²
Air Connection	PT(NPT)1/4		NPT1/4
Gauge Connection	PT(NPT)1/4		NPT1/4
Ambient Temp	-20~70 °C (-4~158°F)		
Min.Filtering Size	5micron		
Material	Aluminum Diecasting		Stainless Steel 316
Weight	0.6kg(1.7lb)		1.4kg(3.0lb)



Air filter regulator YT-200 and YT-205 series suitable reduce plant's main air supply pressure and supplies to valve positioned/s or control device/s.

- It maintains the stable outlet pressure, regardless of the fluctuation of pressure input or flow rate.
- It is easy to install and maintain due to light – weight and small size.
- 5 micron filter sorts minuteness particles in the air flow.
- Relief function is available, which discharges to atmosphere if the outlet pressure is higher than setting pressure.