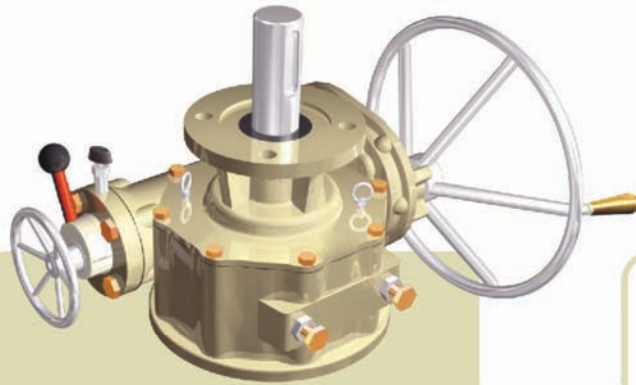




Somewhere it should be noted that these units have been specifically developed for use with Pneumatic and Hydraulic Actuators providing a positive mechanical means of manual operation

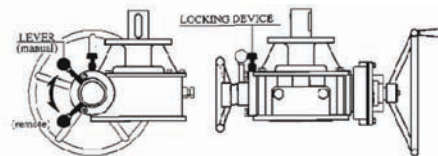


Bushing Type
Splines permit accurate alignment of valve stem key

FEATURE

- All mounting bases conform to ISO 5210/1 Standards
- All castings are Ductile iron, Class 65-45-12
Excellent strength and impact resistance
- Worm Gear material is available in two options
 - Ductile iron, Class 80-55-06
 - Aluminum bronze, B148-C95800
- Worm is 4140 Heat Treated Alloy Steel
- Removable splined Bushing to permit accurate positioning between gear drive and valve stem
- Options include hand wheels, chain wheels, etc

Manual Override Operation



1. Pull up on locking device knob.
2. Rotate lever to "Manual" position.
3. Handwheel can now be operated.
(Note: pneumatic actuator is now fully disengaged)
4. The lever must be placed back in "Remote" position for Pneumatic operation.

< CAUTION >

- Operate to check the position of manual and remote.
- When convert "manual" position, control the position of worm shaft and then operate to accord with worm gear.

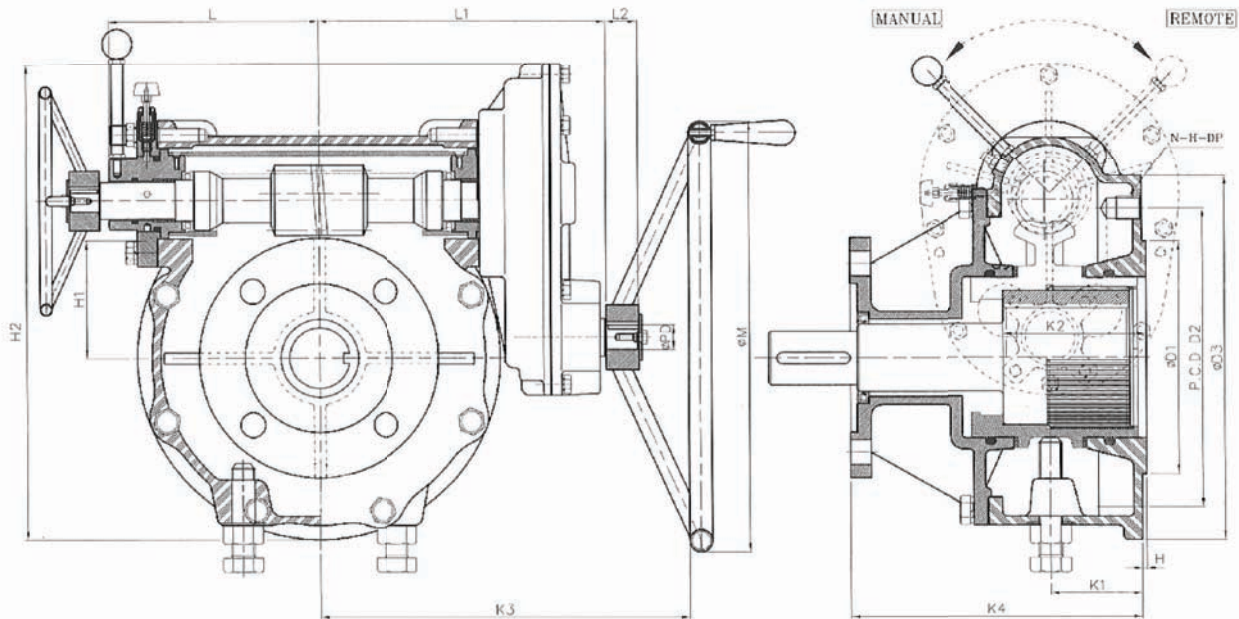
SELECTION CHART FOR MANUAL OPERATORS

MODEL	SIZE	GEAR RATIO	MAX. Stem Acceptance	Mounting option & Standard	MAX. Torque Capacity		WEIGHT
					N • m	Ft • lbf	
ASBWG-00-1SDC		67 : 1	36 (10x8)	F-10, F-12	1000	738	16
ASBWG-01-1SDC		74 : 1	46 (14x9)	F-12, F-14	1550	1143	21
ASBWG-02-1SDC		112 : 1	60 (18x11)	F-14, F-16	2400	1770	32
ASBWG-03-1SDC		121 : 1	75 (20x12)	F-16, (F-20)	4300	3172	43
ASBWG-04-1SDC		156 : 1	95 (25x14)	(F-20), F-25	7700	5680	85
ASBWG-05-1SDC		167 : 1	115 (32x18)	F-25, F-30	14800	10916	112
ASBWG-06-1SDC		232 : 1	140 (36x20)	F-30, F-35	26700	19693	202
ASBWG-07-1SDC		247 : 1	180 (45x25)	F-35, F-40	51100	37690	315
ASBWG-08-1SDC		268 : 1	225 (50x28)	F-40, F-48	106000	78182	585



Declutch Gear

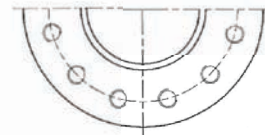
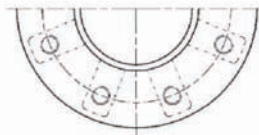
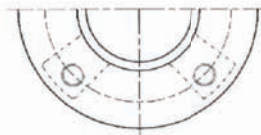
Horizontal input with single Reduction Gear Attachment



TYPE "A"

TYPE "B"

TYPE "C"



DIMENSION

Unit : mm

DIM MODEL	TYPE	BASE PART						EXTERNAL PART								INPUT SHAFT PART			HAND WHEEL ØM				
		FLANGE SIZE	ØD1	D2	P.C.D N-H-DP	ØD3	H	H1	H2	K1	K2	K3	K4	L	L1	L2	ØPD	KEY					
ASBWG-00-1SDC	A	F-12	85	125	4-M12-20 1/2"-13UNC	150	2	58	196	51	55	230	157	123	160	24	21	6x6	300				
ASBWG-01-1SDC		F-14	100	140	4-M16-25 5/8"-11UNC	175		71	221	52	67	260	176	132	170					34	26	8x7	450
ASBWG-02-1SDC		F-16	130	165	4-M20-30 3/4"-10UNC	210		88	283	63	77	307	198	156	198								
ASBWG-03-1SDC	B	(F-16),F-20	160	205	8-M16-25 5/8"-11UNC	250	3	109	325	63	87	341	216	169	211	34	26	8x7	560				
ASBWG-04-1SDC		F-25	200	254	8-M16-25 5/8"-11UNC	300		139	413	89	111	400	257	197	260					44	38	12x8	630
ASBWG-05-1SDC		F-30	230	298	8-M20-30 3/4"-10UNC	365		179	490	91	134	454	274	231	294								
ASBWG-06-1SDC		F-35	260	356	8-M30-45 1"-8UNC	465		222	615	110	156	543	319	276	353					44	38	12x8	800
ASBWG-07-1SDC		F-40	300	406	8-M36-52 1 1/4"-7UNC	475		280.5	713	109	125	193	576	230	376								
ASBWG-08-1SDC		C	F-48	370	483	12-M36-55 1 1/4"-7UNC		560	3	339.5	871	130	135	235	662					294	462	44	38