



News

The smartest quarter turn and multi turn actuators come from the one stable

Limatorque QX quarter-turn, smart electronic valve actuator mimics the state of the art, non-intrusive, multi-turn MX actuator by including a patent pending absolute encoder for tracking position without the use of troublesome batteries. The QX design provides enhanced safety and reduced downtime through improved diagnostics, built-in self-test (BIST) features and LimiGard™ fault protection.



The QX design builds on more than 10 years of experience with proven Limatorque MX technology the first-generation double sealed electronic valve actuator designed to provide control, ease of use and accuracy. The QX includes all the user-preferred features of the MX in a quarter-turn, smart actuator package.

WIOA water exhibition is coming to Tamworth in April

Acrodyne will be participating in the 3rd Annual WIOA NSW exhibition in Tamworth. The event will be held between Tuesday the 31st of March and Thursday the 2nd of April at the Tamworth Regional Entertainment & Conference Centre. Come and say hello to Chris and Andrew on Stand A3.

WIOA is an Incorporated Association and invites Membership from any persons responsible for carrying out the whole, or part operation and maintenance of any facet of the Water Industry. Members may be derived from the Private or Public Sector.

Acrodyne now offers the option of a polycarbonate sensor housing on the YT-2301 series positioners from YTC.

Corrosion is very often a problem where aluminium housings are used in areas especially where caustic wash-downs are performed. The YT-2301 comprises of the YT2300 Smart electro-pneumatic positioner and a remote sensor normally encased in the standard aluminium housing.

The main feature of this positioner and remote sensor is the ability to locate the sensor at the actuator and the positioner can be safely located in a cubicle or a less harsh environment. All electronic communication is done via a single cable.



Acrodyne has taken the next step in transferring the sensor device to an IP67 housing thus giving ideal protection in corrosive areas. The housing includes a stainless steel namur shaft which can be easily adapted to linear operation.

Proximity Controls

For many years Acrodyne has been supplying Proximity Controls range of switches to the valve process industry. Proximity Controls switches are renowned for their solid cast alloy housing with the option of full stainless housing.

The range is divided into four model types. Mark 1 (Magnetic coupling) Mark 3 (Multi-turn) Mark 4 (Through Shaft) Mark 6 (Protected reed switch)

In the Mark 1 and Mark 4 models the options of Mechanical Switches, Inductive Sensors, Potentiometer, Transmitter and Optical Sensors are available. Combinations of the above are possible within the one housing.

Within the range are two drive options. Direct drive is well suited to ¼ turn Namur applications. The option of lever drive is well suited to linear applications.

SAA Certification Ex d Class 1 Zone 1 is available in most models.



Welcome to the first issue of Techtorque for 2009. Your feedback about our newsletters as well as your suggestions for any particular products or applications that you would like to read about is always welcome. With your input, we will do our best to provide you with informative and relevant reading matter. Please email your comments and requests to our Sales and Marketing Manager, Chris Hoare, at choare@acrodyne.com.au.

Limatorque QX
The next generation in smart quarter turn electric actuators

Built-In Self-Test (BIST)
Brushless DC motor
Absolute Encoder
LimiGard[™]



WIOA NSW 3rd Annual Water Operators Expo



Tamworth Regional Entertainment & Conference Centre

March 31 st - 2nd April



How to set up the new *Limitorque* dashboard software on your PDA

About MX/QX Dashboard Software

The MX/QX is the non-intrusive intelligent actuator of choice for users demanding safety, quality, ease of configuration and technology leadership. Flowserve Limitorque's commitment to technology leadership is demonstrated in an available Bluetooth® option that permits a user to download or upload configuration routines via a standard low-power wireless communication path to an actuator. The MX/QX actuator can communicate via Bluetooth with a Bluetooth-equipped PC, PDA, or cell phone compatible with the Microsoft Windows® Mobile platform and the MX/QX Dashboard actuator diagnostics GUI (graphical user interface) software. This document outlines the flexibility of the Dashboard software.

The MX/QX Bluetooth option contains a Frequency Hopping Spread Spectrum (FHSS), which enables a reliable communication link, even in a "noisy" environment. The Bluetooth option also contains 128-bit data encryption to protect the privacy of the link. Bluetooth communication is accessible up to 10 metres (~30 ft.) from the actuator in all directions, and the ability to enable the Bluetooth communication link is password protected. When the Bluetooth link is enabled, a visible blue LED in the controls LCD window signifies that an active Bluetooth link to the actuator is established.

The Dashboard actuator software program permits a user to easily access either the configuration routines or the diagnostics capability of the MX/QX actuator using a Bluetooth-equipped PC or PDA with the Windows Mobile 5 platform. Dashboard is driven by GUI and parallels the menu selections of the MX/QX (see Installation and Operations manuals LMENIM2306 and LMENIM3306). It can be used to change or view configurations up to 10 metres from the actuator when a Bluetooth link is established. A secure Bluetooth link must be established before configurations can be altered, ensuring security and safety. Once the link is established, Dashboard can be used to change or view the default configuration in either active online mode or background mode.

Online mode allows a user to make unit configuration changes in real time by simply answering "Yes" or "No" to the menu prompts. Exiting the program saves the changes to the MX/QX. These changes can be subsequently downloaded from a Bluetooth-equipped PC or PDA and uploaded to other MX/QX actuators that require identical configurations. This feature speeds the setup of the remaining actuators.

Offline mode allows a user to program a unit configuration, save the configuration to a PC or PDA, and upload into an MX/QX once the Bluetooth link is established. This feature enables the user to assign a unique configuration for any number of actuators in a non-volatile environment, save it to the computer device, and schedule the upload to the actuators when planned maintenance is performed.

Diagnostics can also be downloaded from the actuator into a PC or PDA via Dashboard and saved for further evaluation. Dashboard can be used to analyze this data or e-mail it to Flowserve Limitorque for evaluation.

These features are available up to 10 metres from the MX/QX actuator equipped with the Bluetooth (BT) option. Dashboard can also be used with the IrDA port supplied with each MX/QX unit. IrDA (IR) communication is limited to < 1m. It also requires a link to be established, but the effective communication distance is typically less than one metre to avoid cross-communication with neighboring devices.

When the MX/QX software is revised, Dashboard can be used to implement newly released software and upload it to the MX/QX. It is recommended that the IrDA link be used to upload new software into the MX/QX actuator.

NOTE: This version supports only the ENGLISH language option.

Installing and Activating Dashboard

Dashboard is supported on the following computer systems:

- PDA - Microsoft Mobile 5 or 6 operating system only with Bluetooth and Infrared capability.
- Laptop* - Microsoft XP® operating system with Bluetooth and Infrared capability. Microsoft Windows VISTA® not supported.
- Desktop* - Microsoft XP® operating system with Bluetooth and infrared capability. Microsoft Windows VISTA not supported.

*Internal or external Bluetooth or infrared devices supported on most PCs. Refer to manufacturer's instructions for installation.

Dashboard is available free of charge when the MX/QX with the Bluetooth option is purchased, and it can be downloaded from www.limitorque.com or on CD.

NOTE: A nominal fee is charged for Dashboard if used on the infrared equipped only MX/QX actuators.

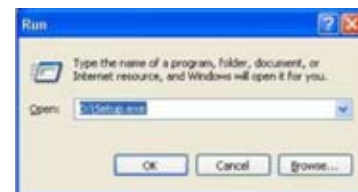
PDA Installation

1. Using Microsoft Active Sync®, copy the dashboard.cab file to the PDA directory of your choice.
2. On the PDA, open the folder where the .cab file resides and select it.
3. Follow the installation instructions (Windows Mobile generated).

NOTE: Dashboard .cab files for the PDA are provided as Widcomm or Wincomm versions. If the program generates an error after installation, the incorrect version was installed.

PC (non-PDA) Installation

1. Insert the CD in your PC CD drive.
2. Open file explorer and select the setup.exe from the CD drive directory.



3. Click OK and follow the installation instructions. Dashboard (PDA or PC) is encrypted and requires a key to unlock the encryption. When the Dashboard software is first activated on your device, a keycode will appear. For example:

• Dashboard Keycode = 7790793D6995DD8

This keycode is then used to generate a random key to unlock the software. For example:

• Dashboard Key = 699907DD893705D

Each key code is unique for every PC and PDA; therefore, the end user must obtain a key code for every installed platform.

Once the key is validated, the end user must accept the terms of the agreement prior to first use.

The key to unlock the code is available from the factory by calling 434-528-4400 and asking to speak with a service representative.

"Limitorque gives any business an excellent return on investment"

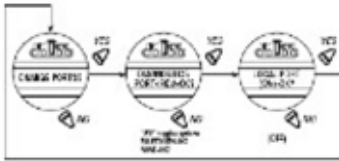
MX/QX Configuration

To configure the MX/QX "port" setting, refer to the LMEIM2306/3306 for detailed instructions.

To use the MX/QX Downloader option on the dashboard, the MX/QX must be configured for IRDA in the "port" setup.

The ModSim option on the Dashboard is supported either via IR or BT.

Setup example for the IR setting in the "port" menu:



Once the port is configured, Dashboard may be used to communicate with the MX/QX via the user selected Local port.

Note: When using the IR option, line of sight is required with the device. For best results hold the IR device approximately 12 cm or less, from the actuator. BT option supports a maximum distance of 10 metres from the device.

Configuring the MX/QX BT option:

- In the 'ports' menu, select the BT port.
- Each BT-equipped MX/QX has a unique identifier. Note for future reference.
- Configure the BT password. Default is "default123456789," a maximum of 16 alphanumeric characters.
- The user has the option to disable the password.

NOTE: Limitorque strongly recommends the use of a non-default password on the MX/QX for security reasons.

• The MX/QX is now ready for use with the Limitorque Dashboard application

Creating the Dashboard Bluetooth Link



This document is designed to demonstrate the capabilities of the Bluetooth link for communication with the MX/QX. IR communication is identical except for the initial selection of the IR/COM link. From this point forward, the BT link shall be used as a reference. The link is established per the following procedure:

- Verify the MX/QX is configured for the BT port option.
- Record the MX/QX password.
- Using the Dashboard application, perform the following:
 - Select the "Bluetooth" button.

The Dashboard application will scan for all BT devices in range.

NOTE: The application will identify all BT devices in range including and not limited to cell phones and PCs.

Note: The FLXMX/QX refers to the MX/QX actuator.

- If the desired actuator does not appear in the scan window, move closer to the actuator and press the "Rescan" button.

If the actuator still does not appear in the scan window, verify the MX/QX actuator in question.

- Select the desired actuator with the mouse cursor (PC application) or stylus (PDA application) and wait for the "ACCEPT" button to activate.

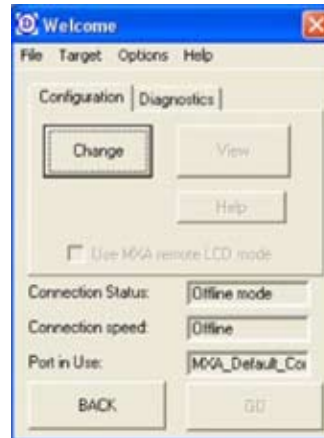


NOTE: If the MX/QX is configured for password protection, enter the password in the Dashboard input field when prompted.

MX/QX Configuration via Dashboard

This section describes the available configuration options applicable to the MX/QX. The below illustrations are applicable to the offline and online modes.

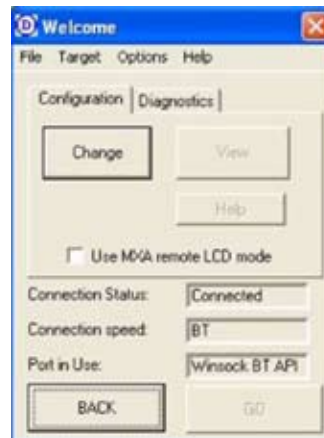
Once in the Welcome screen below, proceed with the MX/QX configuration detailed below:



In the OFFLINE mode, the following user access is available:

- File > Exit – Exits the offline mode
- Target > Compare – Allows for saved file comparison
- Options > Download – Opens the MX/QX Downloader application
- Options > Modsim – Opens the Modsim application

NOTE: All other links are not accessible.



In the ACTIVE mode, the following user access is available:

- File > Exit – Exit the online mode
- Target > Config > Download – Downloads the MX/QX configuration
- Target > Config > Upload – Uploads a configuration to the MX/QX
- Target > Config > Compare – Compares the saved configuration to the recently downloaded configuration
- Target > Reset – Resets the MX/QX resulting in a lost link
- Options > Download – Opens the

MX/QX Downloader application – IR OPTION only

Options > Modsim – Opens the Modsim application; can be used with BT or IR

NOTE: All other links are for factory use only.

Acrodyne participated at the Australasian Oil & Gas Exhibition in Perth

Last month Acrodyne participated in the Australasian Oil and Gas Expo 2009 in Perth. As is usual for exhibitions, there was a lot of meeting with existing customers, competitors and other industry associates, as well as a steady flow of interested parties not previously familiar with Acrodyne as a supplier to the Oil and Gas market. Generally we found the exhibition to be a great success in showcasing our range of Oil and Gas Actuation and Control products, which includes Heavy Duty Pneumatic and Hydraulic actuators, Control systems, Limatorque Electric Actuators, Subsea and topside heavy duty gearboxes, Stainless Steel actuators, Ex approved Positioners, Position Indicators and Solenoid Valves.

Acrodyne shared the stand with the Western Australian Limatorque representative Zedflo, who had on show their extensive range of instrumentation and calibration equipment (for more information visit www.zedflo.com.au) and Matic Actuators from the UK, manufacturers of the uniquely designed Camtorc heavy duty pneumatic and hydraulic actuators (for more information visit www.matic-actuators.com).



Acrodyne's Internal Salesperson Adrian Jeffs designed the stand layout and graphics for the 6 x 6 metre stand, coordinated all the products shipping from around the world and the stand set-up. Everything came together smoothly, so another job well done for Adrian.

At this stage we are booked in for next year's exhibition as well, so if you missed visiting this year, keep the 24-26 March 2010 free to join us at the Australasian Oil & Gas Expo 2010.

Ten years of Maria



January this year marked another milestone in Acrodyne's history with Maria Scapin celebrating 10 years with the company. Maria will generally be the first person you speak to when you call Acrodyne so embarrass her and give your congratulations next time you call.

"hello Acrodyne...Maria speaking"

character first and the importance of boldness

"Confidence that what I have to say is true and correct"



Why is boldness important?

Boldness enables us to stand firm when are confronted by challenges that must be handled correctly and honestly.

5 Keys to Building Boldness:

- "Earn the right to speak" – wait patiently for credibility to grow.
- "Know the truth" – examine information to determine what is true.
- "Stand for what is right" – look for integrity and excellence.
- "Support others" – support others even if it is not your problem.
- "Speak with humility" – see beyond opinions and agendas.

For more information regarding Character First contact Philip Greenwood at People and Culture on (03) 9018 7971 or 0411 131 449

www.peopleandculture.com.au



"100% Australian owned"
ACRODYNE
Actuation and Control

HEAD OFFICE
14 / 11 Havelock Road
Bayswater VIC 3153
info@acrodyne.com.au
Phone (03) 8727 7800
www.acrodyne.com.au