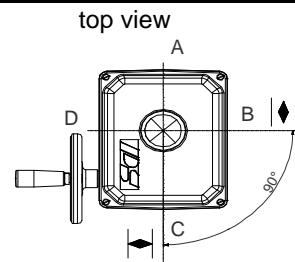


Customer _____	Name _____
Street _____	Date _____
Post Code, Place _____	Tel. No. _____
Order <input type="checkbox"/> Inquiry <input type="checkbox"/> No. _____	Fax No. _____

Seating Torque _____ Nm	Closing Time _____ s
Modulating Torque _____ Nm	Connection Flange ISO 5211
Rotation Angle _____ °	Enclosure <input type="checkbox"/> IP 65 <input type="checkbox"/> IP 67 <input type="checkbox"/> IP 68

Selected Actuator PSQ _____ / _____ / _____ / _____



Quantity _____ Pieces Requested Delivery _____

Power Supply 230 VAC 115 VAC
 24 VAC 24 VDC

Binary Inputs 24 VAC/DC (standard) 115 VAC 230 VAC

Configuration

Closing direction rotating valve shaft clockwise rotating valve shaft counter-clockwise

Limit cut off	open	<input type="checkbox"/> by position	<input type="checkbox"/> by position automatic	<input type="checkbox"/> by torque
	close	<input type="checkbox"/> by position	<input type="checkbox"/> by position automatic	<input type="checkbox"/> by torque

Input signal 0-20 mA 4-20 mA 0-10 V 2-10 V other _____

Actuation direct acting reverse acting

Feedback signal 0-20 mA 4-20 mA 0-10 V 2-10 V other _____

Actuation direct acting reverse acting

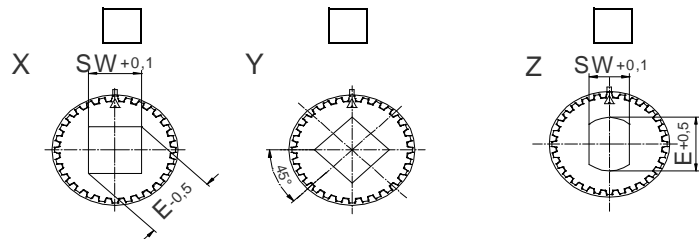
Action at setpoint error actuator to closed position actuator stop
 actuator to open position move to _____ % position

Action on failure of power supply move to closed position stop
 (only with PSEP) move to open position move to _____ % position

Customization Square / Double D:

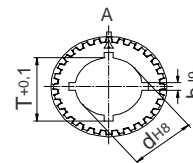
Top view in CLOSE direction

Flat Width SW: _____ mm
 Dimension Cross Corners E: _____ mm
 Valve Shaft Length L: _____ mm



Customization Keyway acc. to DIN 6885/1:

Bore Diameter d: _____ mm
 Keyway Width / Depth b: _____ mm t: _____ mm
 Keyway Position A: B: C: D:



Special Customization

Thread M _____
 Bore Diameter k: _____ mm
 Height h: _____ mm
 Actuator Side Valve Side

