

- Designed for small quarter-turn applications. This actuator can also automate valves requiring up to 360-degrees rotation.
- Engineered to be lightweight and compact for greater versatility.
- The unique housing design allows various options to be installed without the additional cost of an external enclosure.
- 4-LED lights are located inside the high impact dome indicator. When the actuator reaches the full open or full close position, the dome lights will illuminate and allow added visibility over a greater distance or in low light areas.
- To help protect the components and extend the actuator's life, a 2-watt anti-condensation heater is included as standard.
- Included with the end of travel motor switches are two additional dry-contacts for auxiliary indication.
- A thermal protector is provided to protect the motor from over heating.
- The worm gear drive eliminates the possibility of back drive and the need for motor brakes.
- Designed for mounting in any orientation.
- In case of a power loss, the manual over-ride is provided for positioning the valve.
- 3 ISO mounting pads are provided for greater flexibility.



Performance

MODEL	OUTPUT TORQUE		OPERATING TIME 90°		MOTOR CLASS(E)	RATED CURRENT (mA)			DUTY CYCLE	NUMBER OF HANDLE TURNS	WEIGHT	
	Kg m	Nm	60Hz	50Hz		W	1 PHASE (AC)					
					24V		110V	230V	24V	S2(%)	Kg	
SA-05	5	50	14	17	6	1.8	0.35	0.23	1.8	75	6	2.80
SA-05L	5	50	14	17	6	1.8	0.35	0.23	1.8	75	6	3.20

Standard Specification

Indicator	Dome type (LED light inside)	Enclosure	Weatherproof enclosure IP68 Nema 4 & 6
Ambient temp	-20°C to 70°C	Power supply	AC 110/230V 1 Ph ±10% 50/60 Hz, DC 24V(AC24V)
Limit Switches	2 open/close + dry contact 2 open/close	Travel angle	90°±5° (extension up to 360°)
Manual operation	Hex key (6mm)	Self locking	Provided by means of worm gearing
Space heater	2W (110/230VAC, 24VDC)	Conduit entries	2 PF 1/2" (option: PG 13.5, NPT 1/2")
Lubrication	Grease moly (EP type)	Materials	Steel, aluminium, alloy bronze
Surface treatment	Anodizing	External coating	Polyester (TGIC-free)

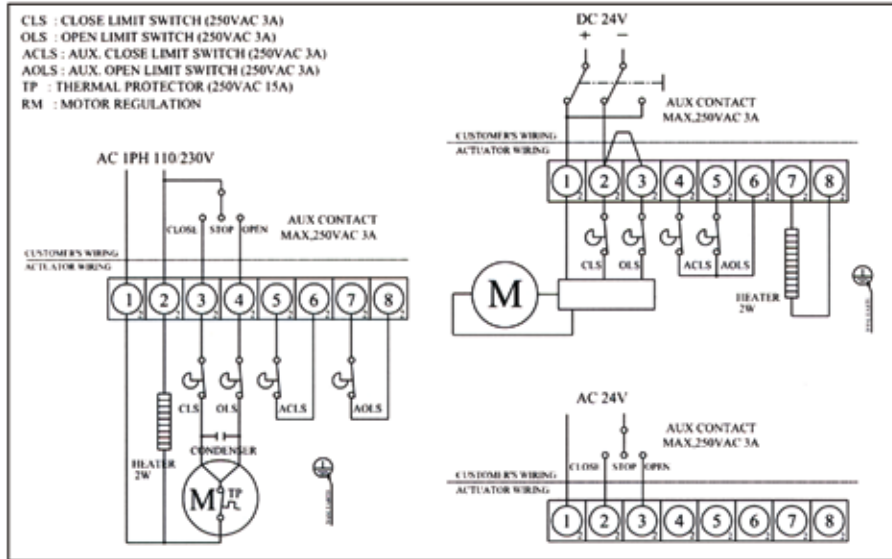
SA SERIES ELECTRIC ACTUATORS

Option

		SA-05	SA-05L
PIU	Potentiometer Unit (1k ~ Ohm)	●	●
CPT	Current Position Transmitter Output DC 4~20mA		●
PCU	Proportional Control Unit Input DC 4~20mA, 2-10V Output DC 4~20mA		●
LCU	Local Control Unit		●



Wiring Diagram



Dimension

SA-05	SA-05L	BASE
		<p>* OPTION</p> <p>BASE B.C.D</p> <p>ISO 5211 F03(ø36 M5TAP DP8) ISO 5211 F05(ø50 M6TAP DP10) ISO 5211 F07(ø70 M8TAP DP13) * ISO 5211 F04(ø42 M5TAP)</p>
<p>MANUAL OPERATION</p>		<p>DRIVE INSERT</p>



Factory 14, 11 Havelock Rd
 Bayswater VIC 3153
 Australia
 T: (03)8727 7800
 F: (03)9729 8699
 www.acrodyne.com.au