

Better Performance without Price Adder

PSQ

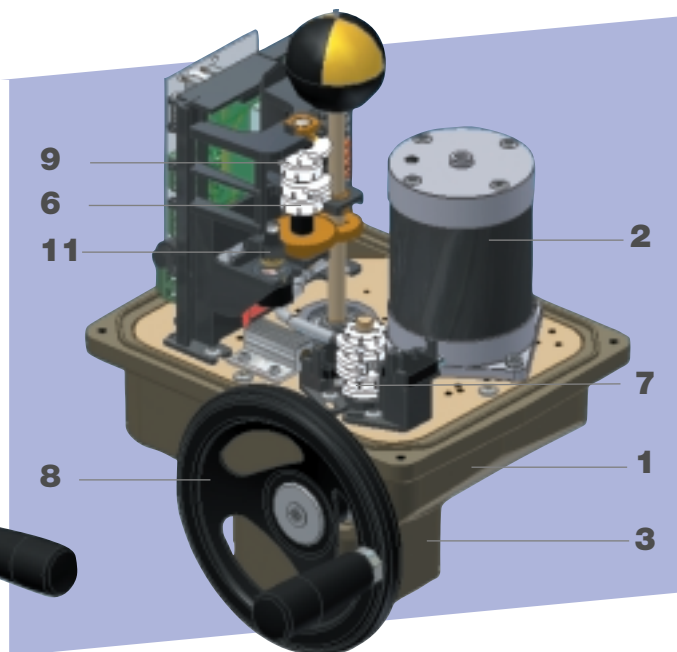
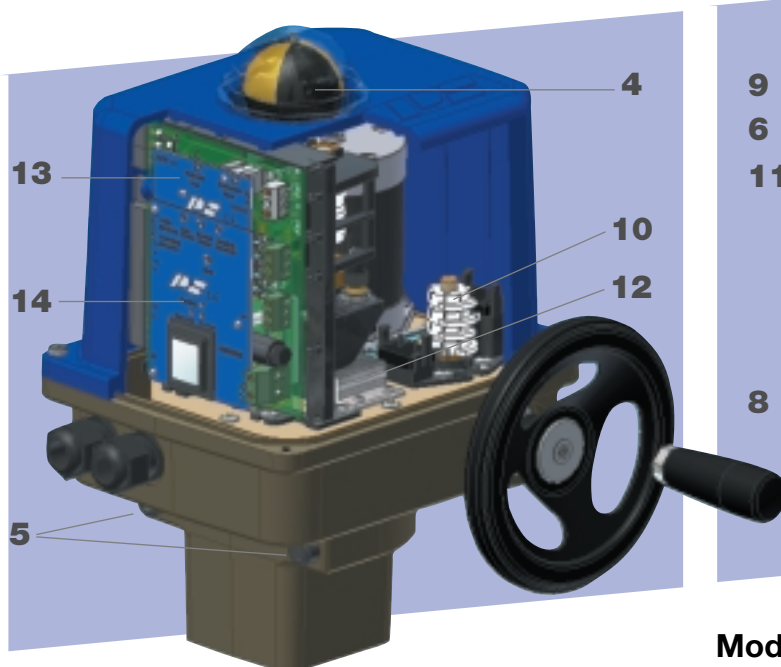
New mechanical parts for the electrical quarter-turn actuators Series PSQ proven in the field for over eight years

The optimization of gear and casing allows several improvements at the quarter turn actuators PSQ. Most sizes are giving a higher torque due to increased efficiency, and the change in geometry allows longer valve shafts to be accommodated. Cost of material and assembly have been improved to ensure a continuously competitive price level.

Customers using PSQ/PSR quarter turn actuators and PSL linear actuators do profit from the simplicity of the modular accessories in several ways, as fewer parts must be held in stock and the training requirements for the sales, service and assembly staff are reduced considerably.

Characteristics for a simple time-saving set-up and long and trouble-free operation which only PSQ actuators can offer in their class:

- 1 Robust, compact and light weight design due to the use of high-quality aluminium die cast material
- 2 Synchronous or brake motors without over-run, for precise positioning and mode of operation S4-1200 c/h
- 3 ISO 5211 connection to valve and exchangeable drive bush of sintered metal
- 4 Easy-to-see mechanical position indicator, adjustable
- 5 Covered stop screws, easily adjustable +/- 5°
- 6 Electrical limit switches that are easily adjustable
- 7 Simple, continuously adjustable torque limiting of 50 - 100 % in open and close directions (PSQ102 and bigger)
- 8 Comfortable hand operation without switching from motor operation to manual operation; the handwheel is motionless when the motor is in operation and is always ready for operation.

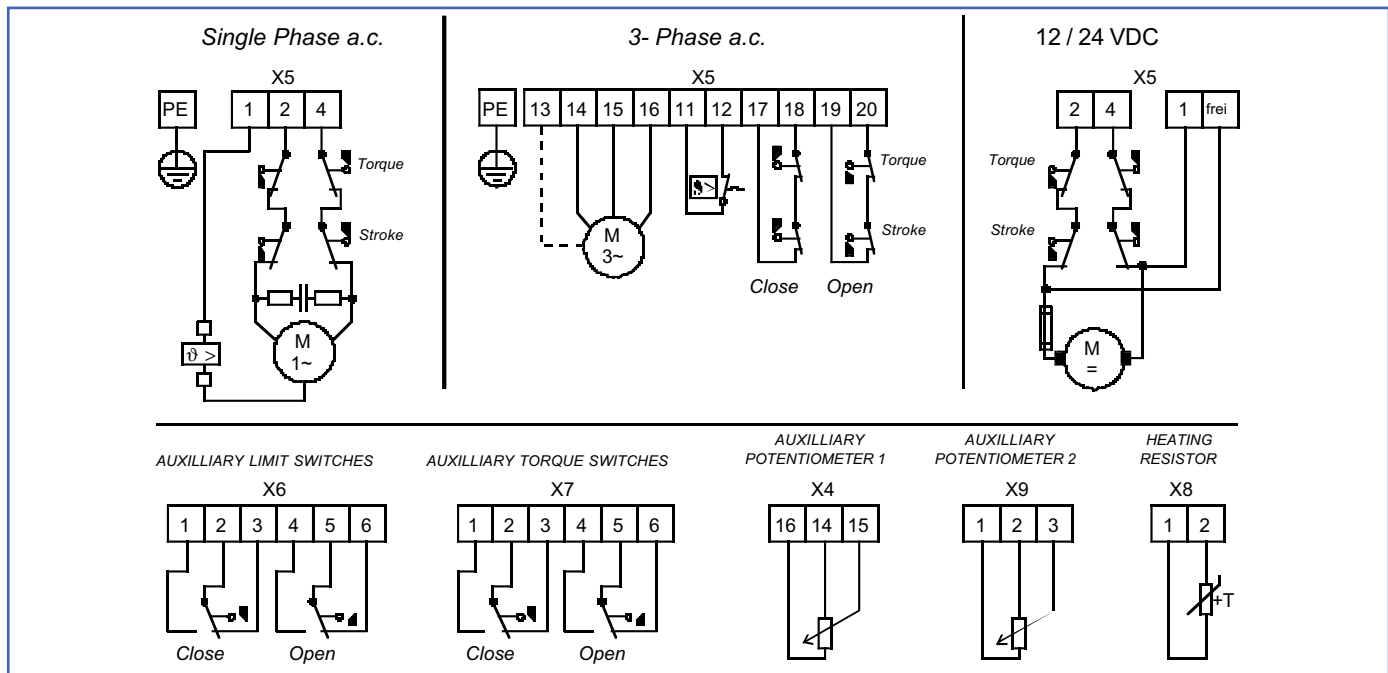


Modular accessories, easy retrofitting even on site

- 9 additional position switches
- 10 additional torque switches
- 11 single or double potentiometer
- 12 space heater
- 13 electronic position transmitter
- 14 electronic positioner

	PSQ52	PSQ67	PSQ77	PSQ102	PSQ202	PSQ502	PSQ702	PSQ1002	
Switching torque ¹⁾ clockwise and anticlockwise rotation	Nm	50	65	75	130	250	500	700	1000
Connecting flange acc. to ISO 5211	F05/F07	F05/F07	F05/F07	F05/F07	F07/F10	F10	F10/F12	F12/F14	
Valve shaft diameter (max.)	mm	20	20	20	20	28	40	40	40
Valve shaft length (max.)	mm	45	45	45	45	60	80	80	80
Handwheel diameter	mm	125	125	125	125	200	250	250	250
No. of handwheel turns to close		18	18	18	18	18	18	18	18
Weight approx.	kg	7	7	7	7	13	27	27	27
Actuation time for 90° angle ²⁾	s	22	32	60	8 ³⁾	20	29	29	29
					16	28	43	43	43
					32	69	93	93	93
					57				
Angle of rotation	0...90° +/- 5°								
Motor voltages	24V / 115V / 230V / 400V 50/60Hz, 24VDC								
Operating mode	VDE0530 S2 or S4								
Manual override	with handwheel								
Enclosure acc. DIN 40050	Standard IP67								
Permitted ambient temperature	-20 bis +80°C, modulating duty up to +60°C								
Position indicator	mechanically, adjustable from outside								
Mounting position	any position except with motor inverted								
Gear case and cover material	high quality aluminium die casting								

1) Torque available for full stroke 2) Closing time for 60Hz less 20% 3) Output not 100% selflocking.



PS Actuators have proven for more than 15 years in industry and ships, in water and sewage technology, in heating and air conditioning, in power station and boiler house plants.

They are especially renowned for their functional conception without unnecessary features that may be prone to failure, and for a precise positioning or controlling and long trouble-free operation.

PS Automation GmbH
Gesellschaft für Antriebstechnik

Philipp-Krämer-Ring 13
D-67098 Bad Dürkheim



Phone.: <+49> (0) 63 22 - 6003-0
Fax: <+49> (0) 63 22 - 6003-20

E-Mail: Info@PS-Automation.com
Internet: http://www.PS-Automation.com